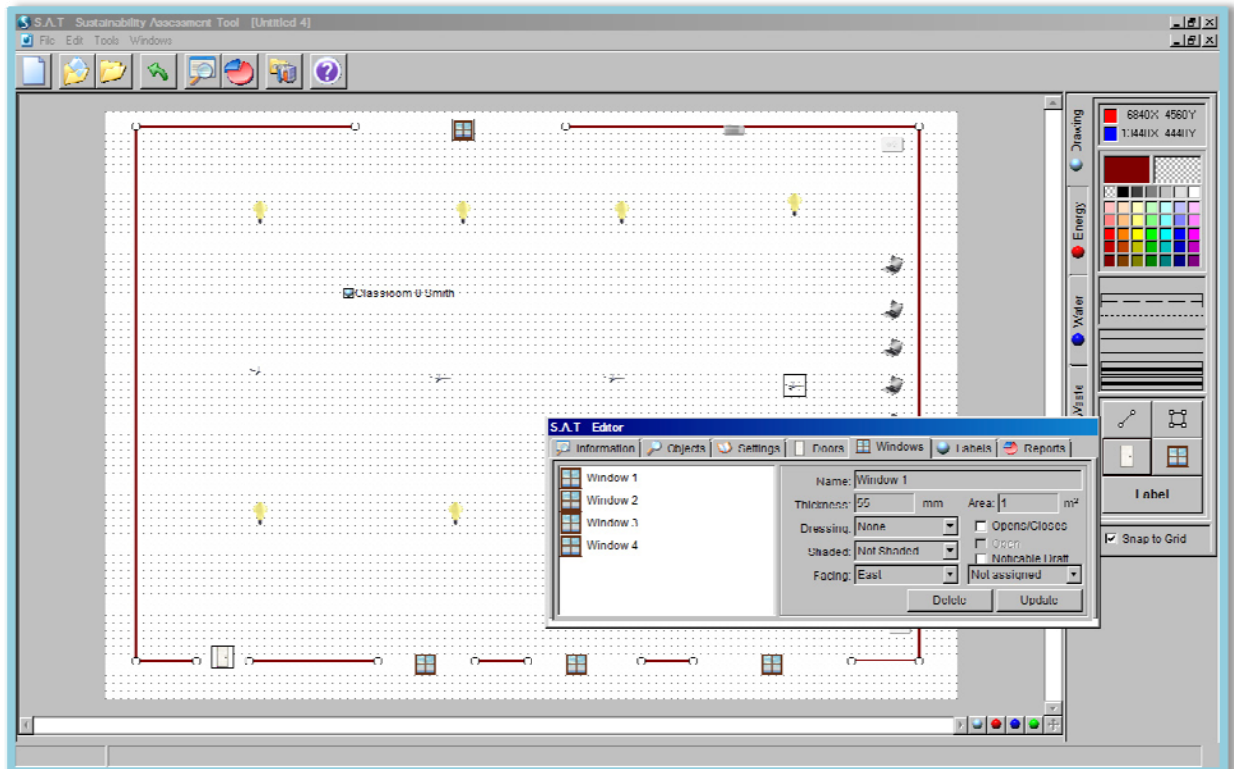




*The time for talking is over, we must act now!*

# SAT™ by EcoTech Soft

The Sustainability Assessment Tool (SAT™) is an icon based software program designed for the school environment that allows students to develop their own sustainability improvement program.



## How does it work?

The software provides a blank canvas with an easy menu driven drawing tool.

A class establishes various project teams and agrees upon the areas to be examined.

The project teams draw their area and populate the graph with relevant icons that are dragged from a menu.

The project team completes a set of questions for each icon placed in the area.

The sophisticated software is then capable of producing a comprehensive report on the overall performance of the area including suggestions regarding possible improvements.

SAT is capable of determining improvements in the areas of energy, waste and water.

The report expresses all result in commonly accepted SI units and in kg of CO<sub>2</sub>.

## What are the benefits of using SAT?

Student ownership of the sustainability improvement program.

Increased student understanding about resource efficiency.

Temporal tracking of the improvements across semesters and/or years.

Spans multiple curriculum areas.

Can be adjusted to match student's skills, capacities and capabilities.

Reduced school operating cost through improved resource efficiency.

Students have the opportunity to apply SAT™ in their home thus multiplying the environmental benefits.

SAT™ is developed by EcoTech Soft, a South Australian company. The software is under constant development and can be tailor made to suit any need. OpenEnergy has the exclusive right to license this excellent package to educational institutions in South Australia.

Call Peter Moser on 8362 2838 or email [info@openenergy.com.au](mailto:info@openenergy.com.au) to arrange for a free demonstration